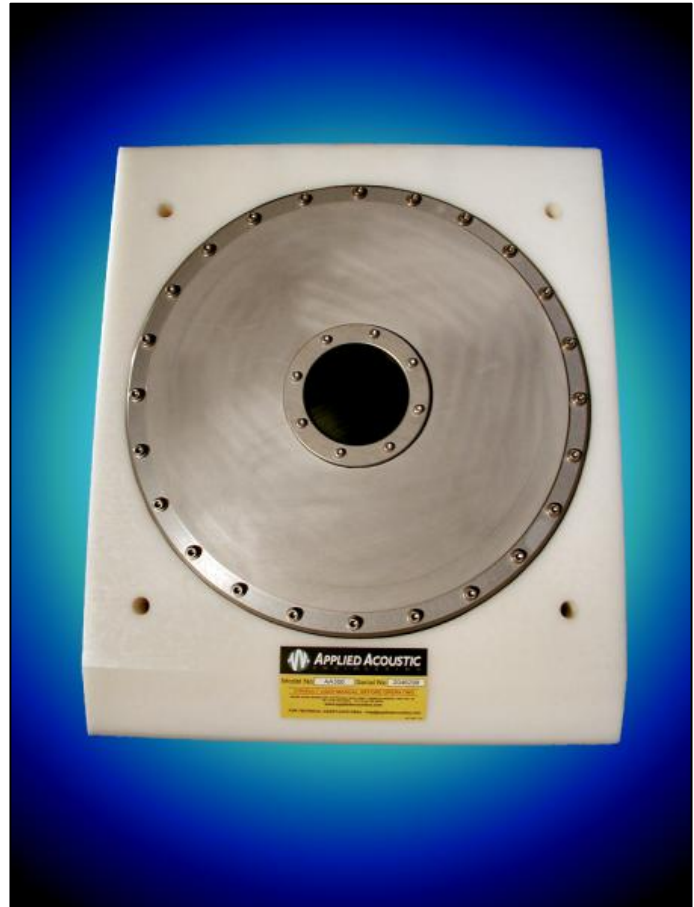


AA300 PRECISION SOUND SOURCE

Probably the first significant change in Boomer Plate design in 30 years, the AAE 300 represents a major advance in Boomer plate technology, utilising many modern techniques to provide total control over pulse shape and frequency spectrum.

Designed specifically to match the latest CSP energy storage units, the extra degree of control made possible by this transducer will enable future systems to provide the exact characteristics demanded by the user. The modular construction also enables the user to reduce down time in the field by carrying the relevant parts to enable reliable and repeatable maintenance.

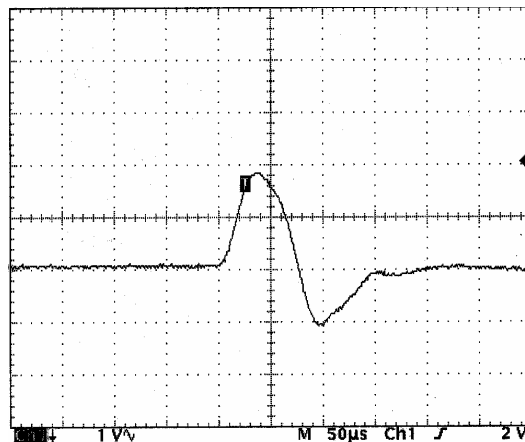


Features include:-

- Unique control of driven plate and precise pulse shape
- Special cooling system for reliability
- Precision engineering for predictable results
- Replaceable components for easy field maintenance
- No adjustments needed to obtain the right pulse output
- High efficiency
- Wide spectral content

Size : 52 x 60 cm.
Weight in air : 25 kg.
Fixing centres : 16" square (As old EG+E Uniboom).
Recommended use : 100-350 / shot.
Maximum energy input : 1000 J / second.
Source Level : 218 dB re 1uPa @1m at 300J.
Pulse Length : ½ cycle 75 uS to 200 uS dependant on energy input.
Reverberation : <1/12 x initial pulse.
Connector type : Enhanced Joy plug male & female.

AA300 Pulse Shape. 100J shown



Part of our integrated range of Sub-bottom Profiler systems. Sample data and spectral information to be available soon.